



**CymbIoT**  
Making IoT Smarter



# Smart Disaster Management

# About CymbloT

CymbloT for Disaster Management

Operational Scenario

Why CymbloT?





# CymbloT for Disaster Management

**The CymbloT Disaster Management platform uses information and communication technologies to manage infrastructure, First Responders, and automatic mitigation technologies, as well as coordinate supplies, population transport, and emergency response procedures.**

**CymbloT's Disaster Management C&C integrates sensors and operational systems into a single network, allowing providers to manage response processes, as well as provide valuable services to citizens and responders.**



# The CymbloT Solution



An **off-the-shelf IOT management product** that provides cities and enterprises with **rapid integration** of new & existing sensors and systems for **efficiency, security** – and **rapid ROI**.



# The CymbloT Offering



## Product, not Program

Market-available, off-the-shelf product with over 50 IoT use cases.



## Immediate ROI

Immediate ROI for cities and enterprises via integration of existing systems and sensors within 14 days



## Flexible

Flexible integration engine to support any sensor and system:

- 70+ formats supported
- Up to 14 days for deployment of new format



## Tested & Proven

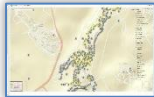
Scalable & Robust architecture supporting any kind of deployment- Cloud & on premise.



# CymbloT C&C Core Features

## Maps

Operational GIS dynamic navigation maps.



## Scalability

Endless connectivity with standard COTS HW.



## BI Data Fusion

Real-time data & operational fusion of all systems.



## Advanced VMS

Internal VMS and 3rd party video support.



## Analytics

Video, Audio & Data Analytics turn data to triggers.



## Automation

Flexible process automation wizards.



## Architecture

Hybrid cloud and on premise deployments.



## Agnostic

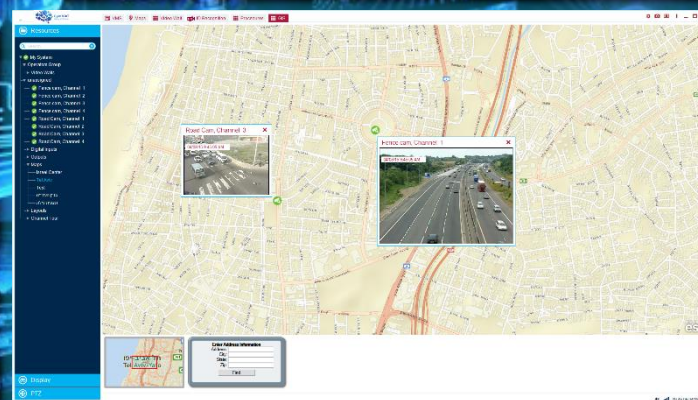
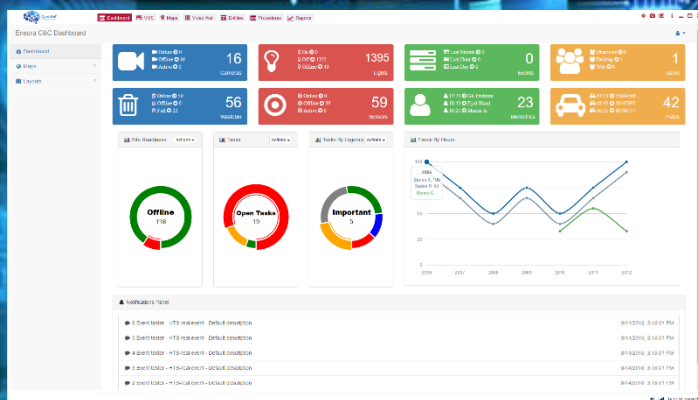
Integrate any 3rd party element.



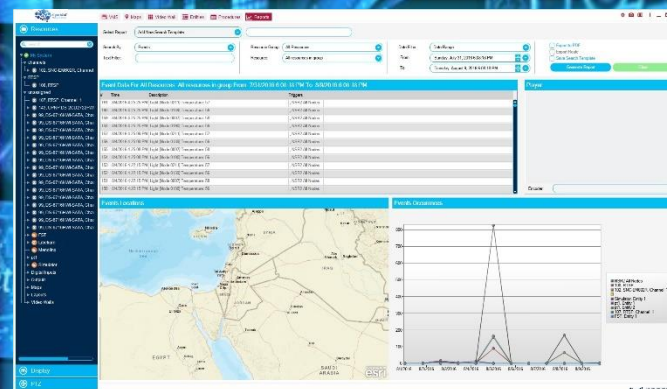
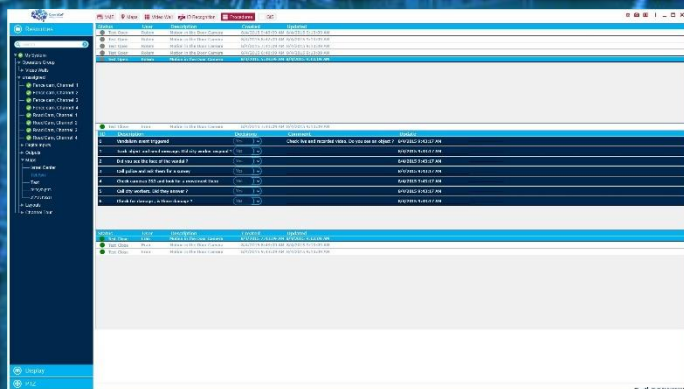
## Customization

On the fly UI design per need.





## A Unified Interface for all Security & IoT Systems

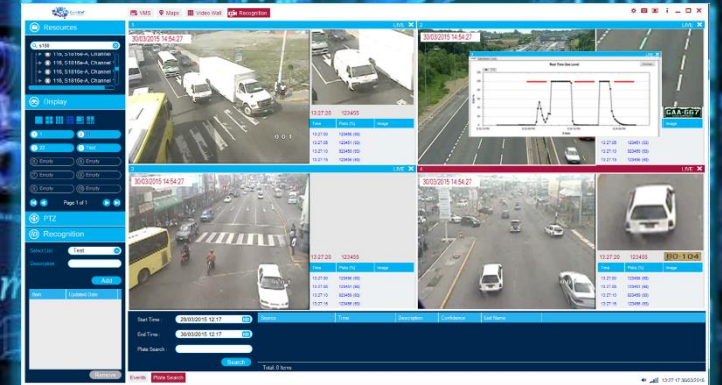
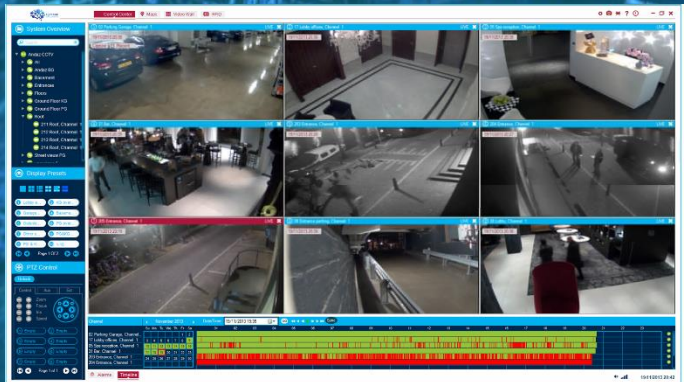


## Reporting & Task Management Module for Cross-system Queries





## Cloud-based & Onsite Deployments



## Support for Proprietary VMS & Internal Video Analytics



About CymbloT

## **CymbloT for Disaster Management**

Operational Scenario

Why CymbloT?



# Internal Deployment Example



## Surveillance Camera

With analytics for identifying location and movement of citizens and responders, and identifying progress of fire, flood, etc.



## Smart Fire Response

Smoke alarms & countermeasures.



## Infrastructure Sensors

Monitoring status of foundations, soundness of structure, stability, etc.



## Flood Sensors

Identify and alert regarding flooding in early stages.



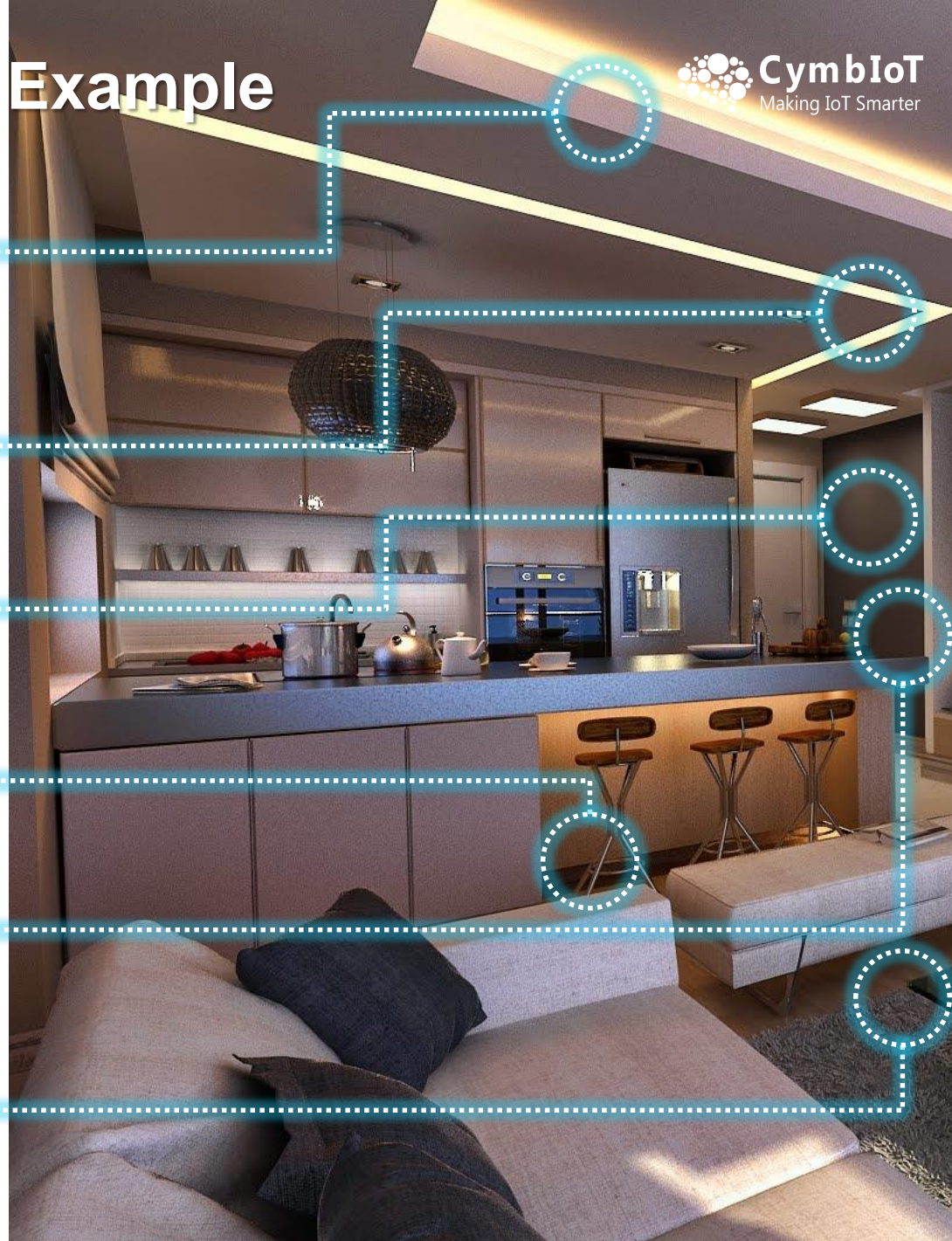
## Panic Buttons

For alerting responders to location.



## Resource Sensors

Smart Lights, Smart Water, Smart Power, etc. –monitoring supply grids, and automatically switching on/off according to response procedures.





# Emergency Asset Management Example



## Surveillance Camera

Help track and monitor status and location of emergency supplies.



## Smart Screens

Displaying requirements, instructions, directions, etc.



## Smart Fire Response

Smoke alarms & countermeasures.



## Equipment RFID Tags

RFID tags on equipment to prevent loss and support tracking.



## Access Control

For preventing looting and ensuring resources are accessible only to personnel with permissions.



## Temperatures Sensors

Track temperature and monitor status of internal conditions.





# Rural Deployment Example



## Wind Sensors

Monitoring wind speed, direction, temperature, etc.



## Infrastructure Sensors

Monitoring status of bridge & levee foundations, structure, stability, etc.



## Water Speed & Pressure

Tracking water speed and flow pressure at different points.



## Surveillance Camera

With analytics for rising water levels & collapsing infrastructure.



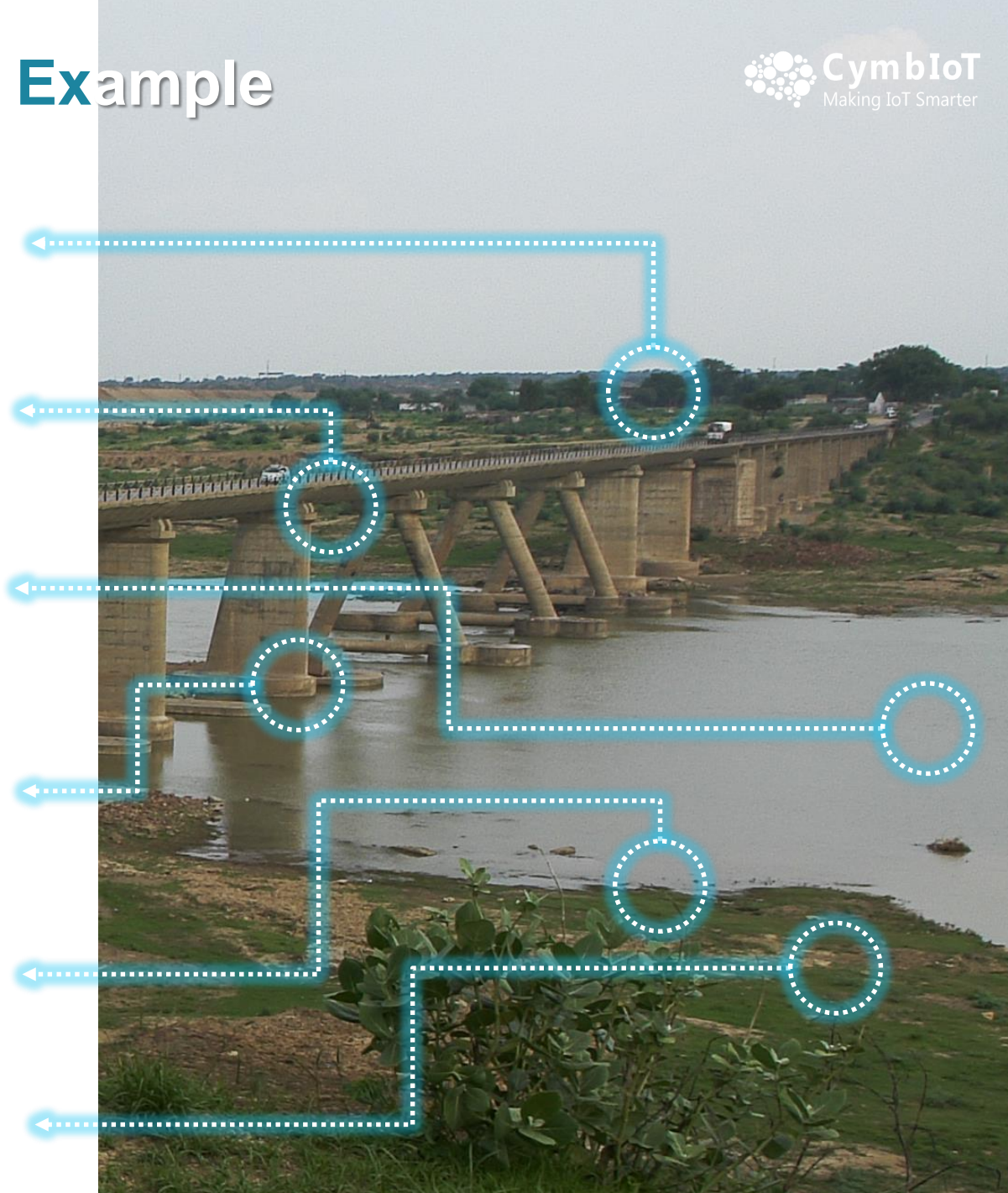
## Flood Sensors

Identify rising water levels.



## Seismic Sensors

Monitoring quake activity.



# Urban Deployment Example



## Surveillance Camera

With analytics for Face Recognition, Abandoned Equipment, and more



## PA System

Delivers announcements, alerts, and notifications to patients & employees.



## Smart Screens

Displaying requirements, directions, evacuation instructions, etc.



## Panic Button

For alerting responders to location.



## Infrastructure Sensors

Monitoring status of foundations, soundness of structure, stability, etc.



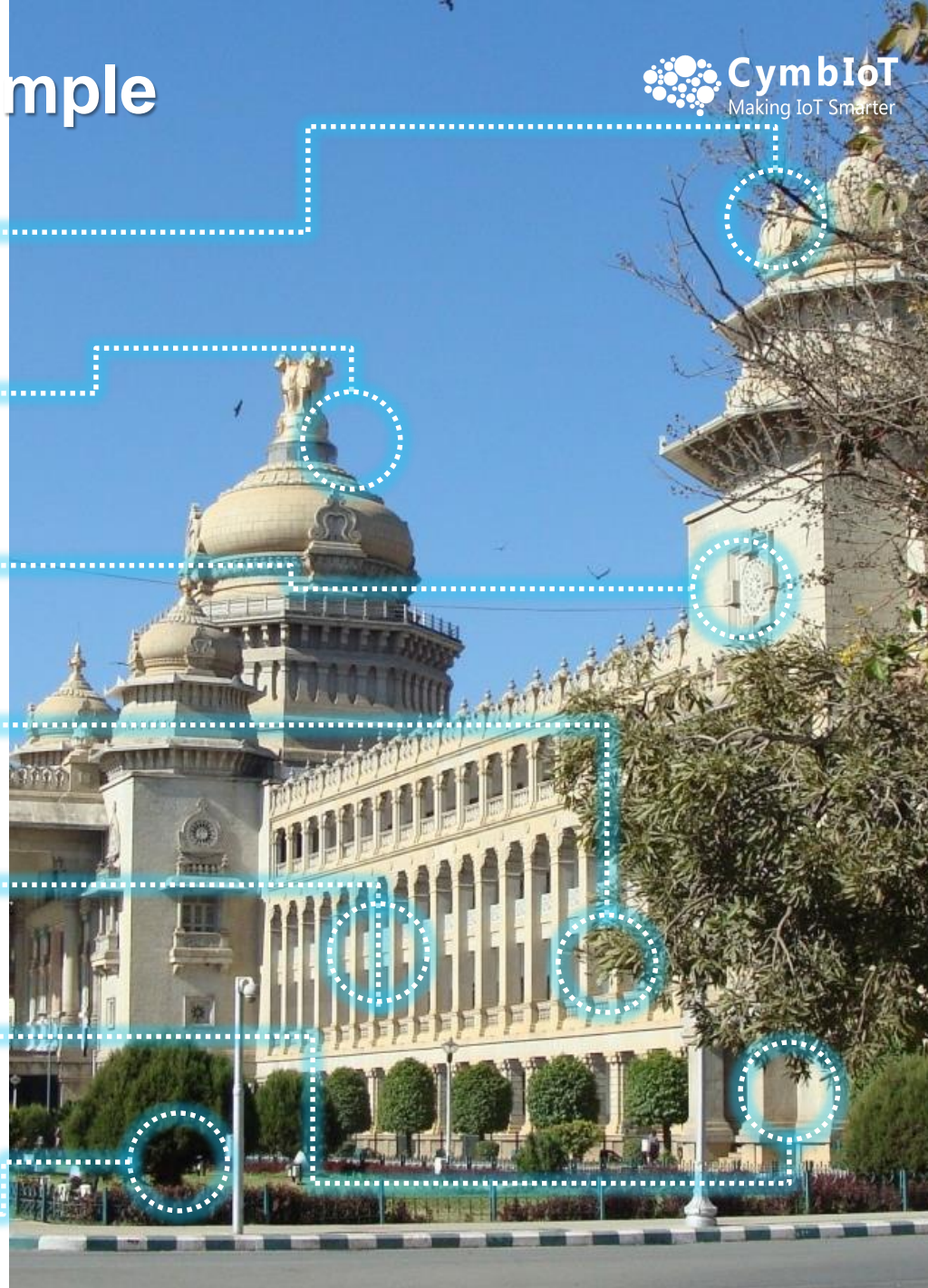
## Wind Sensors

Monitoring wind speed, direction, temperature, etc.



## Soil Sensors

Monitoring soil quality & acidity.

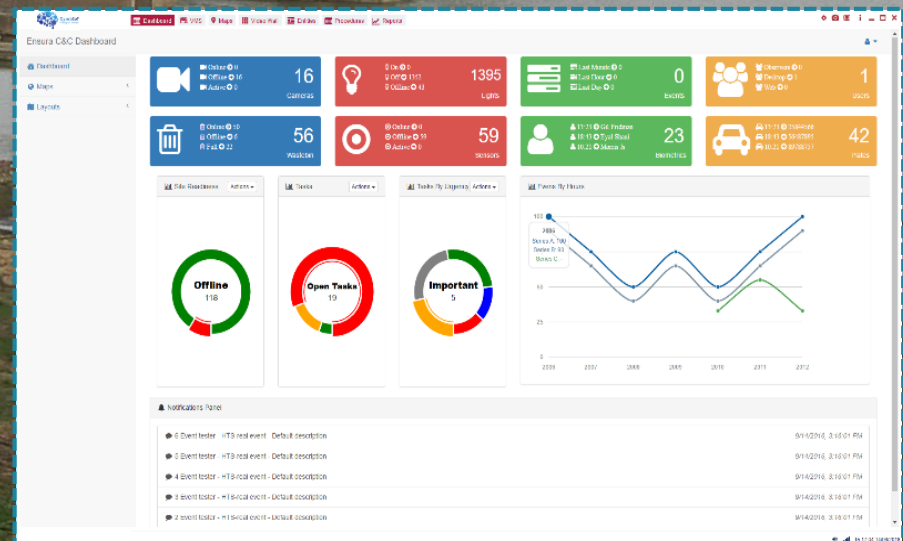
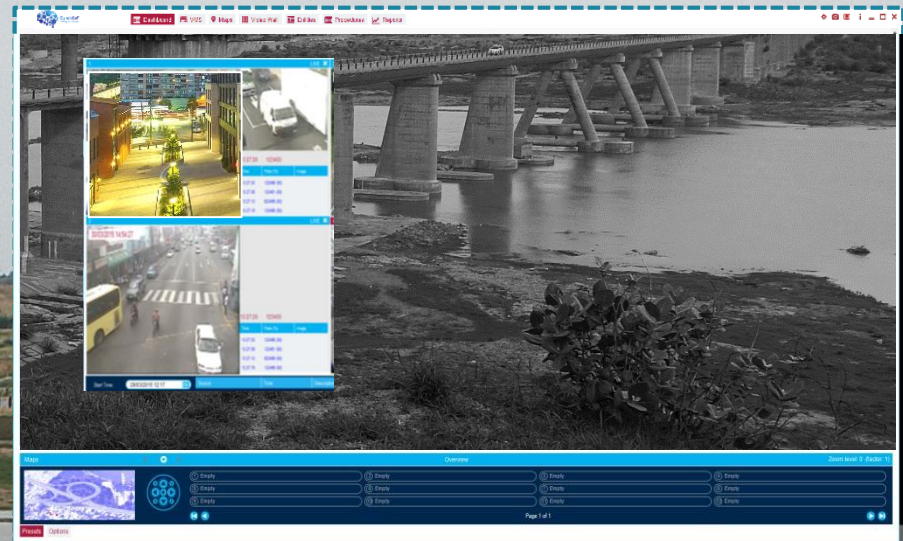
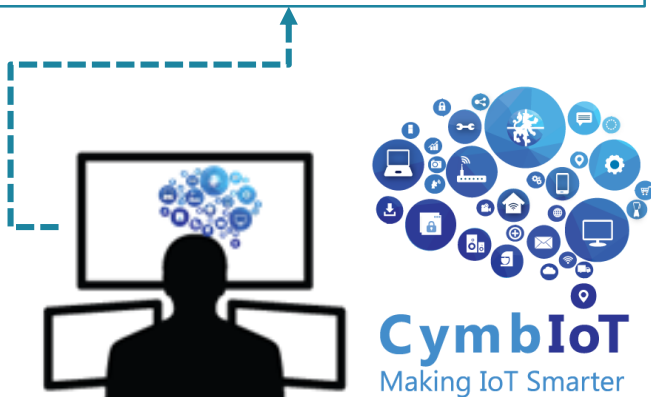




# Fusion with CymbIoT

**CymbIoT integrates all sensors and subsystems, correlating all types of data with operational triggers, and providing real-time status, analysis, and response capabilities to employees & managers:**

- ▶ Virtually limitless scalability & flexibility
- ▶ Powerful automatic process engine
- ▶ Permission-based GUI customization per user
- ▶ Operator Dashboard & Executive Dashboard
- ▶ Integration with any 3rd party sensor or system



About CymbIoT

CymbIoT for Disaster Management

**Operational Scenario**

Why CymbIoT?



# Managing Flooding Event

1. Water levels rise & bridge infrastructure compromised





# Managing Flooding Event

1. Water levels rise & bridge infrastructure compromised

2. CymbloT is alerted via:

- Surveillance camera
- Flood sensors
- Infrastructure sensors





# Managing Flooding Event

1. Water levels rise & bridge infrastructure compromised

2. CymbloT is alerted via:

- Surveillance camera
- Flood sensors
- Infrastructure sensors

3. CymbloT implements procedures:

- Alerts citizens with text message
- Alerts authorities
- Puts warnings on Smart Signs





# Managing Flooding Event

1. Water levels rise & bridge infrastructure compromised

2. CymbloT is alerted via:

- Surveillance camera
- Flood sensors
- Infrastructure sensors

3. CymbloT implements procedures:

- Alerts citizens with text message
- Alerts authorities
- Puts warnings on Smart Signs

4. CymbloT coordinates response:

- Directs construction team to bridge
- Directs First Responders to area
- Directs traffic police to close roads





About CymbloT

CymbloT for Disaster Management

Operational Scenario

**Why CymbloT?**

# ► Why Choose CymbIoT C&C?

A single Command & Control interface for all existing and new sensors, systems, and subsystems, providing:

Rapid, out-of-the box integration.



Immediate ROI from Day One



Interface between all data & systems.



UX for operational & executive levels.



**CymbIoT**  
Making IoT Smarter



# Some Global References...



## NETHERLANDS

Hyatt Hotel Chain  
Management & Security



## ISRAEL

4 Smart City Programs



## MEXICO

Federal Jail Management  
& Security



## JAMAICA

Kingston Safe City



## NEPAL

International Airport  
Management & Security



## NETHERLANDS

Private port Management  
& Security



## SINGAPORE

Safe Transit Program



## INDIA

Petrol Station  
Management & Security



**CymbIoT**  
Making IoT Smarter

## HEADQUARTERS

**Mail:** P.O.B 37, Azur 5819001  
ISRAEL  
**Tel:** +972 (0)3-631-6881  
**Contact Us:** [info@cymbiot.com](mailto:info@cymbiot.com)

## SINGAPORE OFFICE

**Mail:** 6A Shenton Way  
SINGAPORE 068807  
**Contact Us:** [APJ@cymbiot.com](mailto:APJ@cymbiot.com)

## ROMANIA OFFICE

**Mail:** Hareju 29, 2nd District, Arh.  
Bucharest, ROMANIA  
**Contact Us:** [office@cymbiot.ro](mailto:office@cymbiot.ro)

## ONLINE CONTACT

[www.cymbiot.com/contact](http://www.cymbiot.com/contact)