



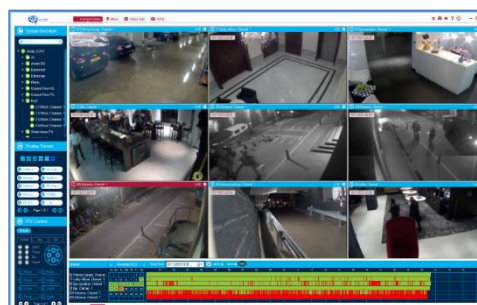
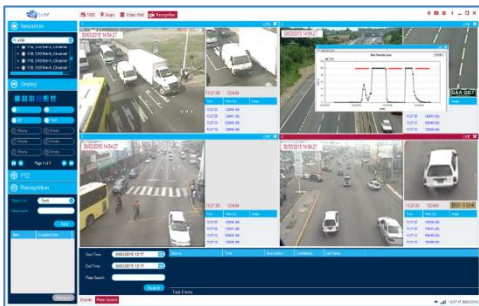
CymbIoT

Video Management System

CymbIoT VMS is the world's most scalable Video Management System, enabling users to manage thousands of cameras - and hundreds of operators to work simultaneously.

CymbIoT VMS provides high quality video, audio, and intelligence surveillance features, allowing easy, continuous monitoring of numerous remote sites, and instant response to any alert.

Designed for large-scale deployments, CymbIoT VMS deployments are currently managing 15,000 cameras in a single platform.



CymbIoT VMS delivers endless scalability and upscaling capabilities: the video management engine does not require scale licenses and can expand from one camera to thousands and more, while, while the VMS system as a whole can easily expand with additional modules into a full Command & Control solution .

Tracking

- Absolute surveillance for moving objects across thousands of cameras and multiple locations.
- Connectivity of all cameras for complete Field of View and Line of Sight.
- "Back to the future" for tracking a moving object at x16.



Video Content Analysis

- VCA support for live and archived data.
- Highest accuracy rate in the market.
- Integrated video analytics on both server and edge device sides.



Dynamic Display

- Unlimited Video Wall display
- Unlimited customization of displays.
- Real-Time & "back-in-time" analysis.
- Multi Layered, dynamic maps.
- Live video and video timed per event.



Advanced Event History

- Event history retrieval by right click on event location, triggering object, or any device group.
- Event search by time, location, object.
- Popup of data related to event.
- Export tool for all data.



Operational Modules

Object Tracking

Absolute surveillance of moving objects across thousands of cameras, with complete Field of Vision & Line of Sight.

Video Content Analysis

Cutting edge VCA on both sensor and server side enables identification, face recognition, object tracking, and more.

Video Wall

Designed for large deployments, endlessly scalable, supports fusion of thousands of images, with visual permissions by sensor, role, etc.

ANPR

Comprehensive Automatic Number Plate Recognition module linking vehicle ID and face recognition, ANPR triggers, and more.

Access Control

Optional module for integrating Access Control based on Face Recognition, RFID tags, biometrics, and more.

Dashboards

Executive-level display of all system operations, including real-time event summaries, live video, charts, and pies – configurable per user.

Disaster Recovery

Real-time DRP insuring that in the event of failure, a backup server takes over without data loss or operational delay.

Failover

N+M failover architecture insures operational continuity by saving all configuration data and enabling full recovery in the event of system crash.

Ongoing CymbIoT VMS Programs

Netherlands	Port Management & Access Control
Mexico	Management of all Mexican federal jails
Israel	4 Smart & Safe Cities
Nepal	Airport Management
Jamaica	Smart Transportation Management

System Architecture

